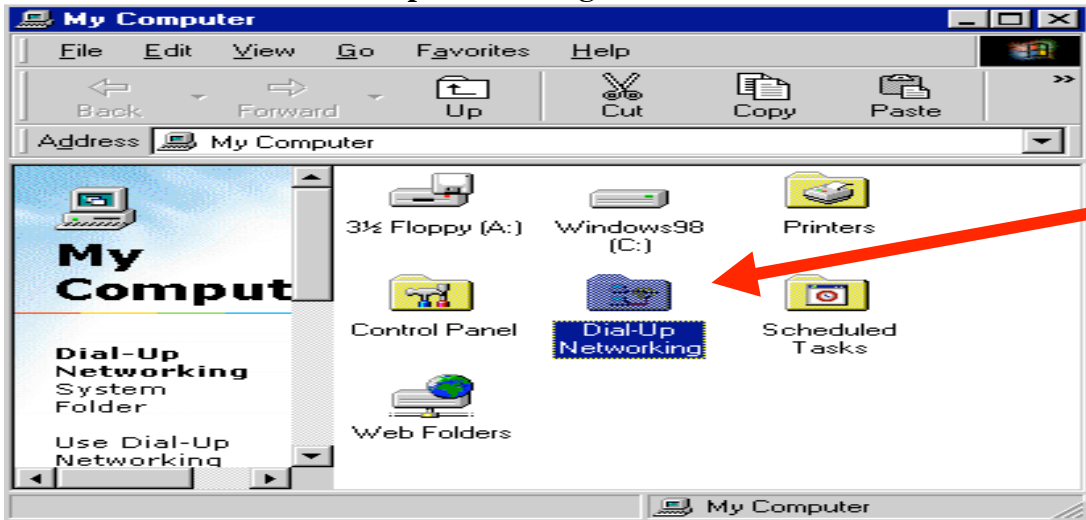
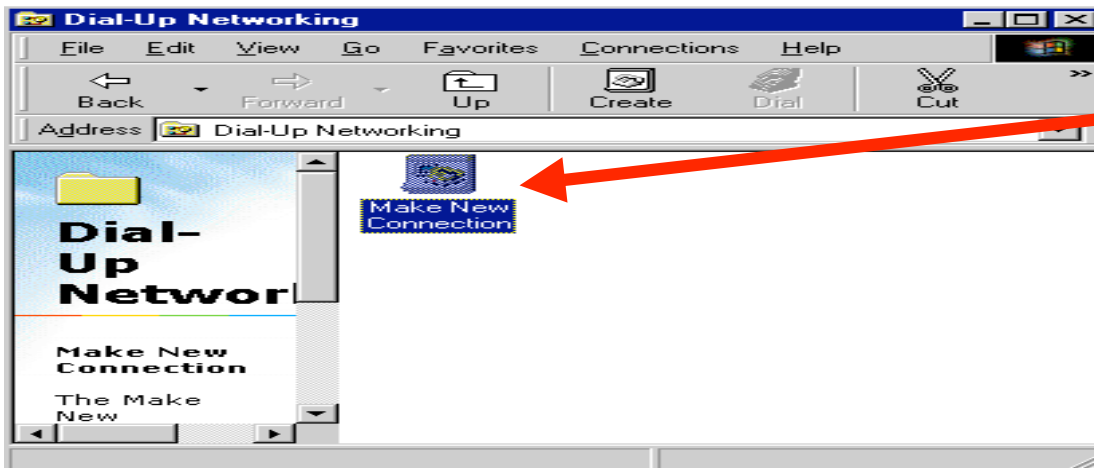


# Dial-up Networking for Windows 95/98/ME

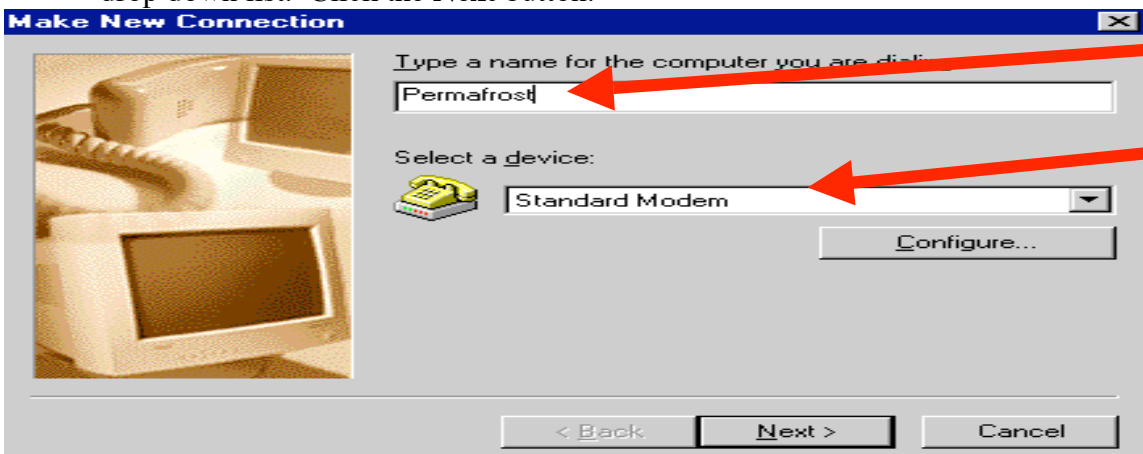
1. Double click the **My Computer** icon on the desktop
2. Double click the **Dial Up Networking** icon



3. Double click the **Make New Connection** icon



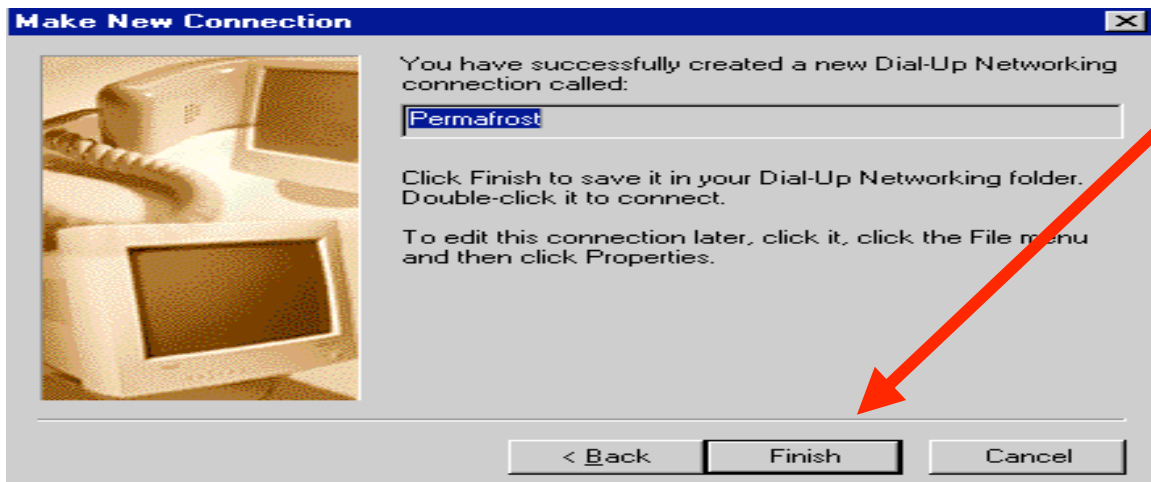
4. The first window that opens will ask you to **Type a name for the computer you are dialing** (i.e. Permafrost, NewNorth, etc). You're also asked to **Select a Device** to dial up to the Internet. Your computers modem should appear in the drop down list. Click the **Next** button.



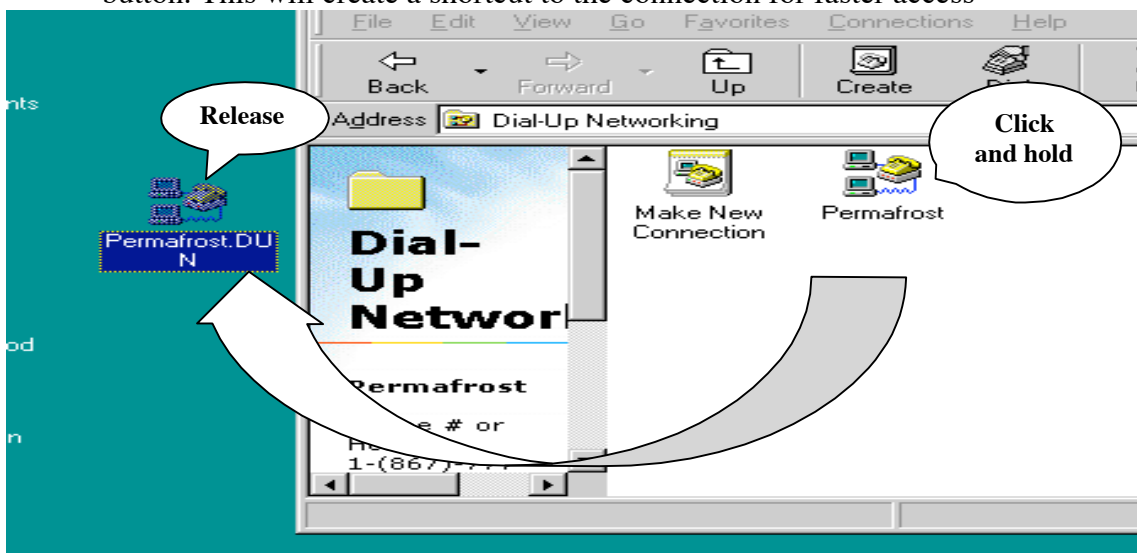
5. Enter the **Area Code** and **Phone Number** you're dialing to connect and select your **Country** from the drop down list. Click the **Next** button.



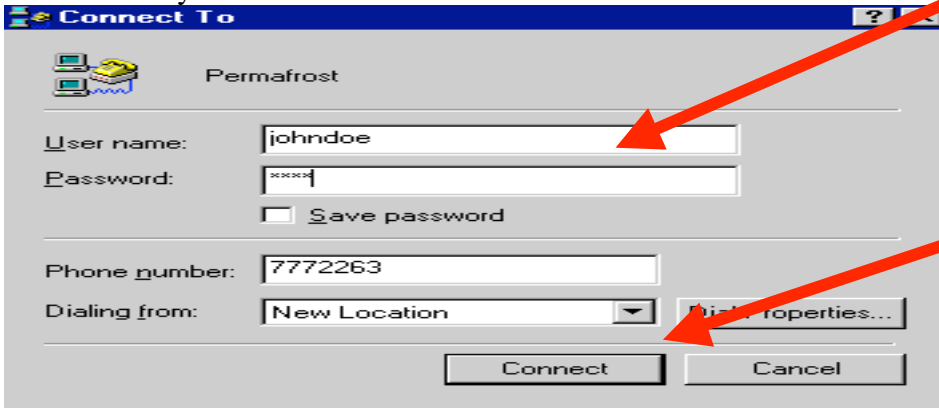
6. Click the **Finish** button to exit the wizard and return to the Dial Up Networking window



7. From inside the Dial Up Networking window, **Click and Hold** your pointer over the new icon that appears and **Drag** it onto the desktop, and **Release** the mouse button. This will create a shortcut to the connection for faster access

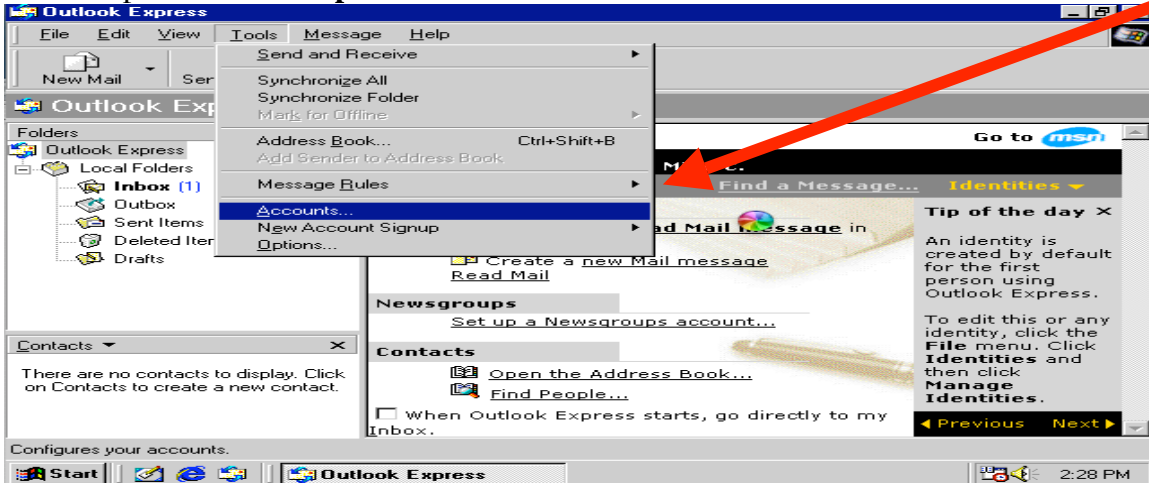


8. **Double click** the shortcut on the desktop you just created
9. Enter your **Username** and **Password** and click the **Connect** button

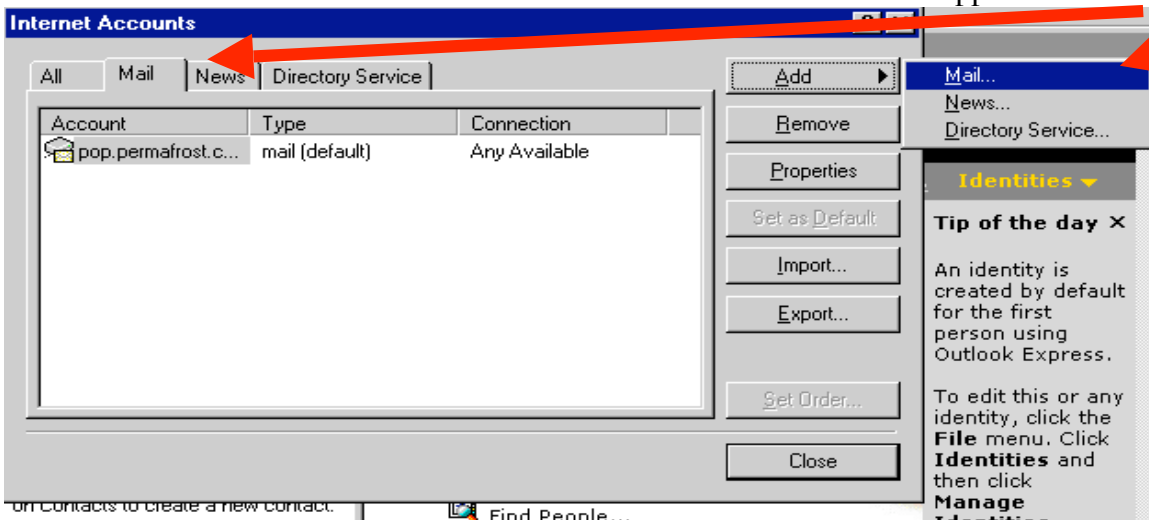


## Configuring your Internet Mail account

1. Open **Outlook Express** and click the **Tools** Menu and choose **Accounts**.



2. When the Internet Accounts windows appears, select the **Mail** tab towards the top.
3. Click on the **Add** button and choose **Mail** from the submenu that appears.



4. The first step is to type your **Display Name**. A display name can be your name or the name of your Internet Service Provider (Permafrost). Click the **Next** button.

Internet Connection Wizard

Your Name

When you send e-mail, your name will appear in the From field of the outgoing message. Type your name as you would like it to appear.

Display name:

For example: John Smith

< Back   Next >   Cancel

5. The next step is to enter your **Email Address**. This will be provided to you from New North Networks. Type in your email address. Click the **Next** button.

Internet Connection Wizard

Internet E-mail Address

Your e-mail address is the address other people use to send e-mail messages to you.

E-mail address:

For example: someone@microsoft.com

< Back   Next >   Cancel

6. In the next window, make sure that **POP3** is selected in the drop down list of Incoming mail servers, and type in the name of your **Incoming** and **Outgoing Mail Servers** in the appropriate area of the window. Click the **Next** button

Internet Connection Wizard

E-mail Server Names

My incoming mail server is a  server.

Incoming mail (POP3, IMAP or HTTP) server:

An SMTP server is the server that is used for your outgoing e-mail.

Outgoing mail (SMTP) server:

< Back   Next >   Cancel

7. For the last step, you will be asked to enter the **Username** and **Password** for your email account. Your Username will be the name of your email address (before @permafrost.com) and whatever password you chose for your account. Click the **Next** button

Internet Connection Wizard

**Internet Mail Logon**

Type the account name and password your Internet service provider has given you.

Account name: johnsmith

Password: xxxx

Remember password

If your Internet service provider requires you to use Secure Password Authentication (SPA) to access your mail account, select the 'Log On Using Secure Password Authentication (SPA)' check box.

Log on using Secure Password Authentication (SPA)

< Back   Next >   Cancel

8. Congratulations, your email is now configured. Click the **Finish** button.

Internet Connection Wizard

**Completing the Internet Connection Wizard**

You have successfully completed the Internet Connection wizard. Your computer is now configured to connect to your Internet account.

After you close this wizard, you can connect to the Internet at any time by double-clicking the Internet Explorer icon on your desktop.

To connect to the Internet immediately, select this box and then click Finish.

To close the wizard, click Finish

< Back   Finish   Cancel