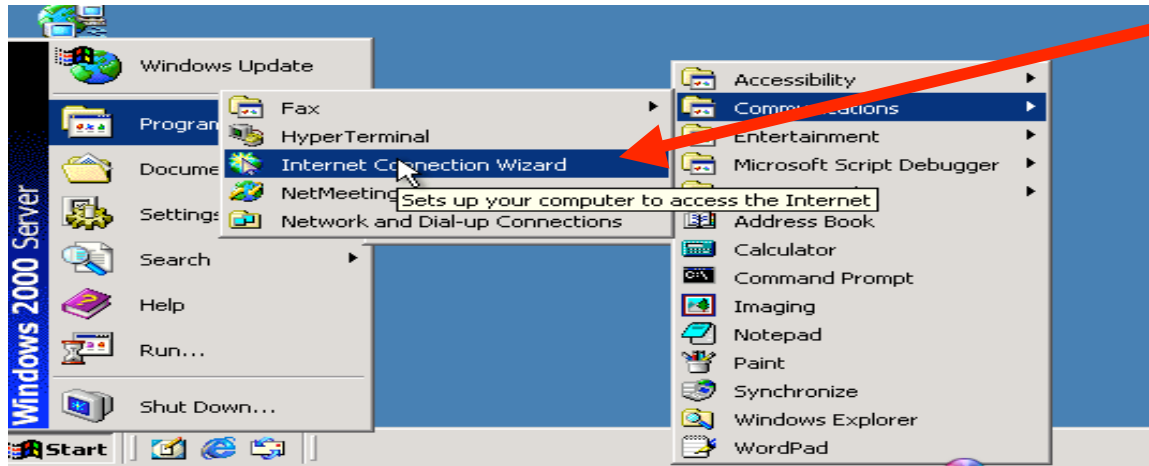
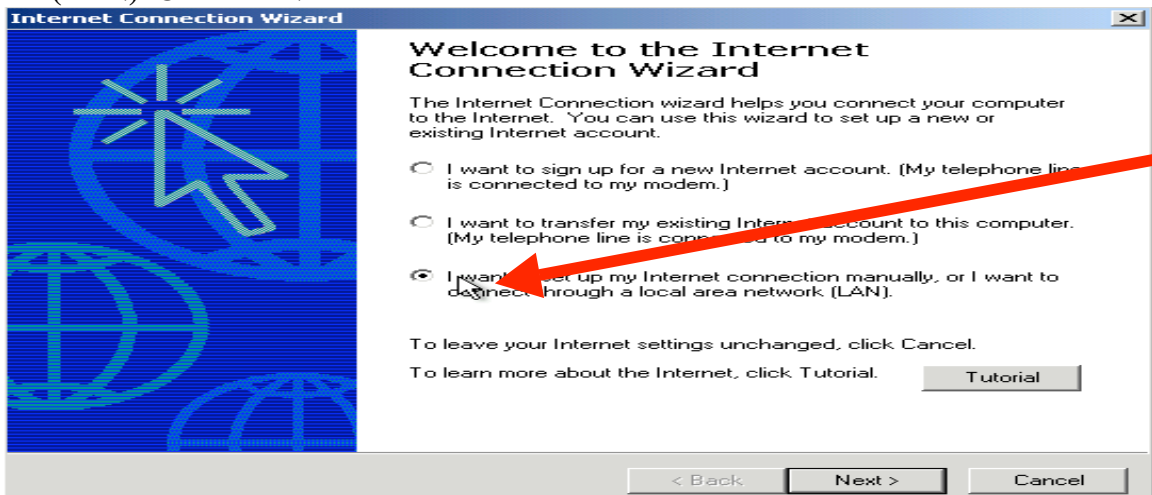


Configure Dial Up Networking for Windows 2000

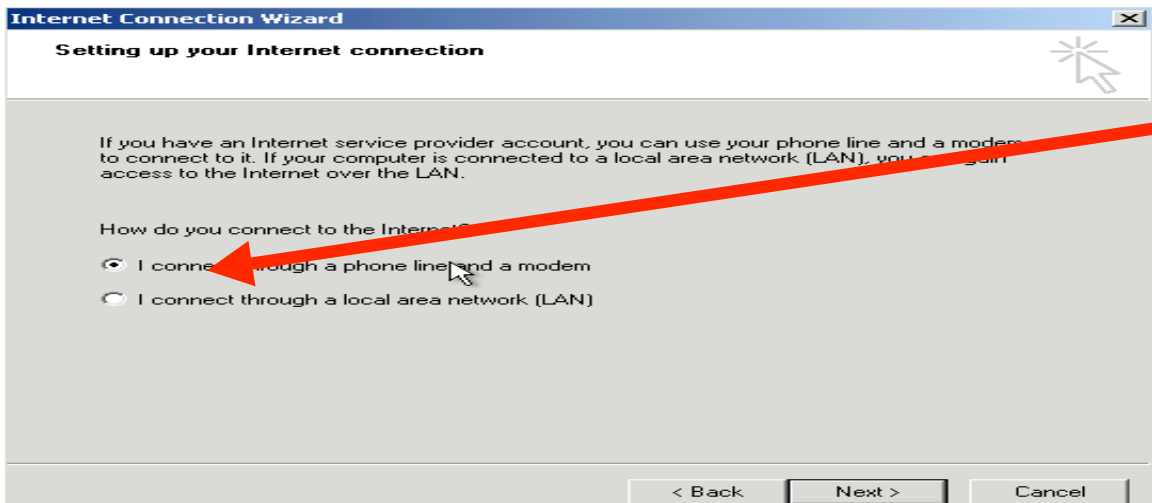
1. Click **Start**, point to **Programs, Accessories, Communications, and Internet Connection Wizard**



2. In the first window, click the button next to **I want to set up my Internet Connection Manually, or I want to connect through a Local Area Network (LAN)**. Click the **Next** button



3. Select the button next to **I connect through a phone line and a modem**. Click the **Next** button



4. Enter the **Area Code**, **Phone Number**, and **Country**. Unselect the check box next to **Use area code and dialing rules**. Click the **Next** button

Internet Connection Wizard

Step 1 of 3: Internet account connection information

Type the phone number you dial to connect to your ISP.

Area code: 867 Telephone number: 777-2263

Country/region name and code: Canada (1)

Use area code and dialing rules

To configure connection properties, click Advanced.
(Most ISPs do not require advanced settings.)

Advanced...

< Back Next > Cancel

5. Type in your **Username** and **Password**. Click the **Next** button

Internet Connection Wizard

Step 2 of 3: Internet account logon information

Type the user name and password you use to log on to your ISP. Your user name may also be referred to as your Member ID or User ID. If you do not know this information, contact your ISP.

User name: johnsmith

Password: *****

< Back Next > Cancel

6. Type a **Name** for your connection. Click the **Next** button

Internet Connection Wizard

Step 3 of 3: Configuring your computer

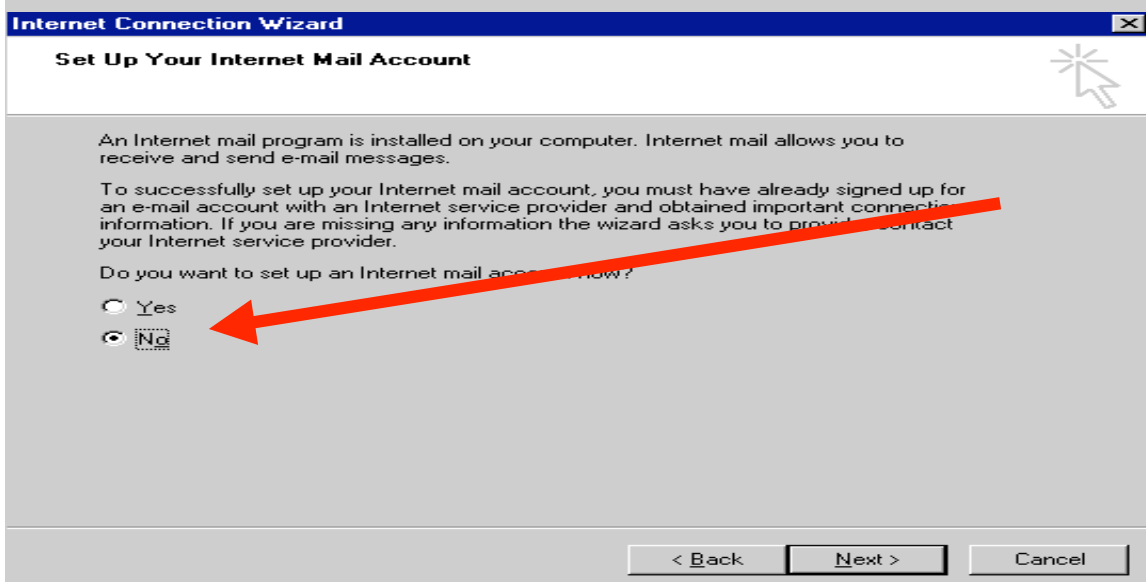
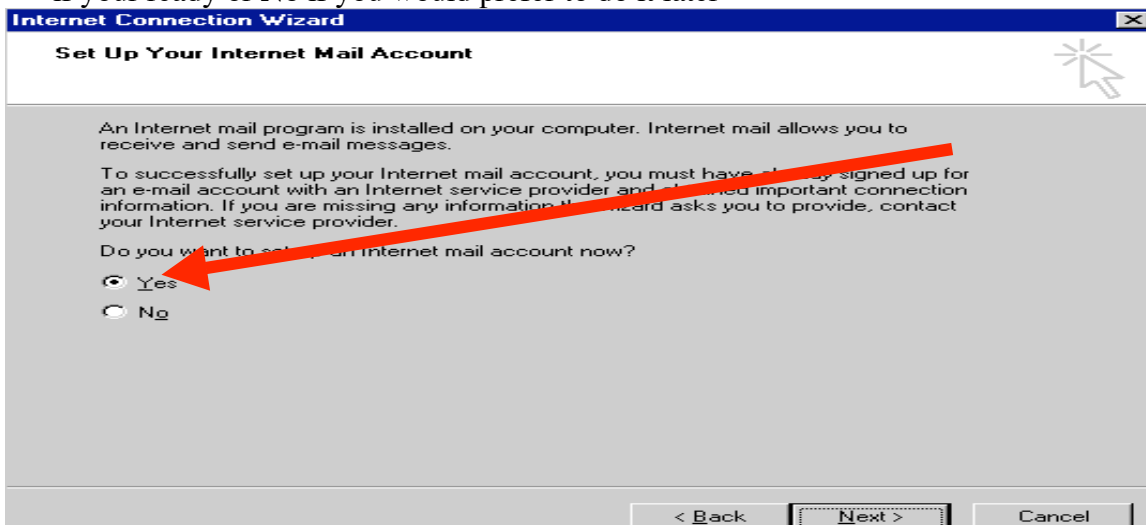
Information about your Internet account is grouped together as a dial-up connection and labeled with a name you provide.

Type a name for the dial-up connection. This can be the name of your ISP or any name you want to use.

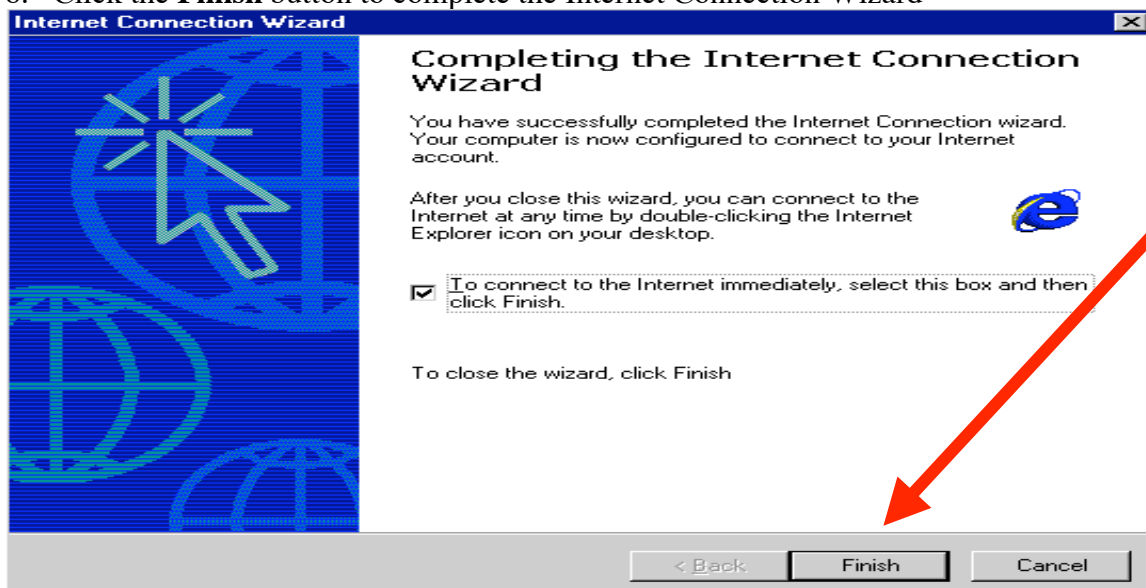
Connection name: Permafrost

< Back Next > Cancel

7. You will be given a choice to setup your E-mail account at this step. Choose **Yes** if your ready or **No** if you would prefer to do it later

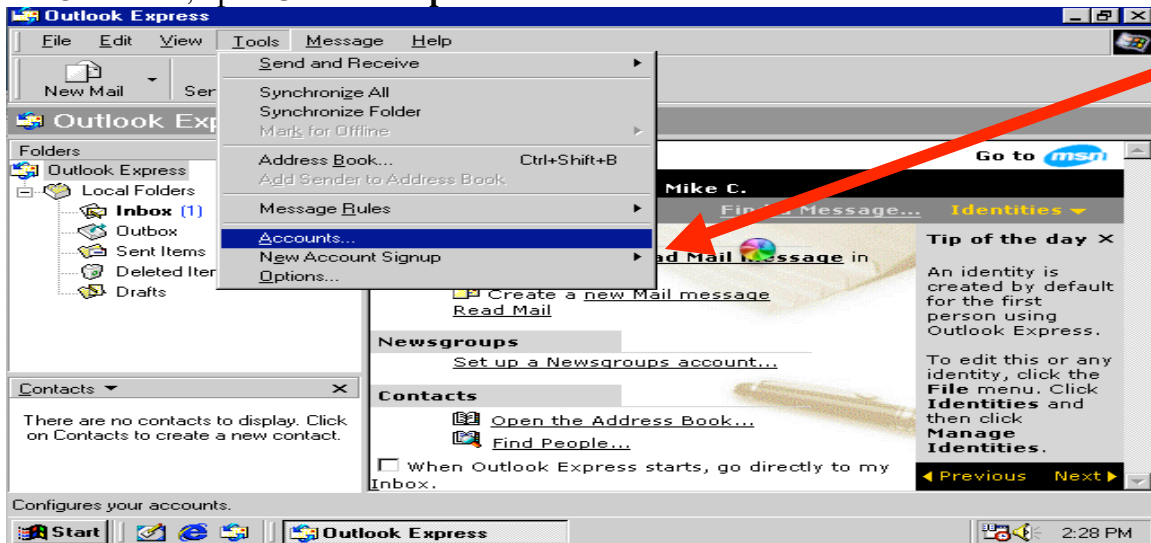


8. Click the **Finish** button to complete the Internet Connection Wizard

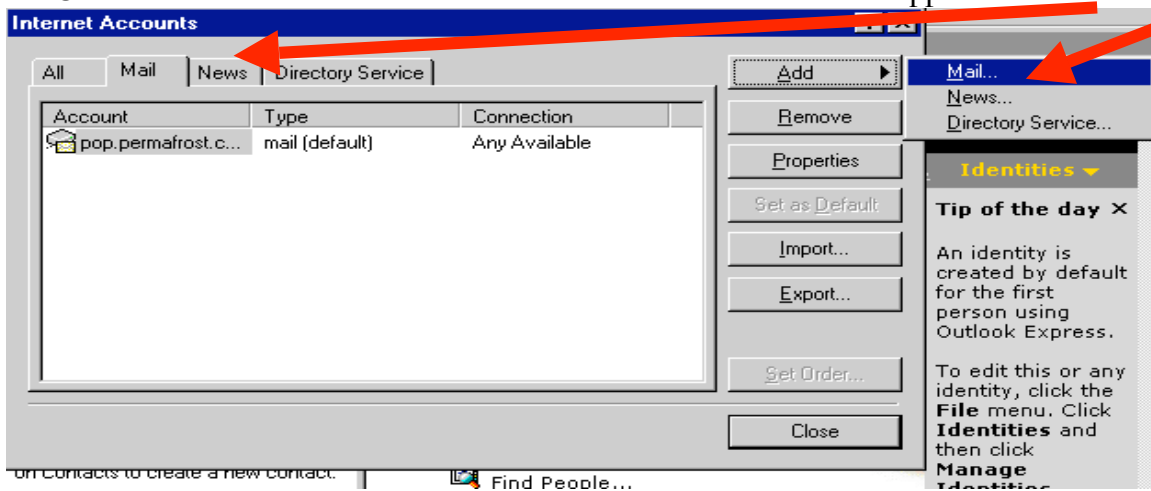


Configuring your Internet Mail account

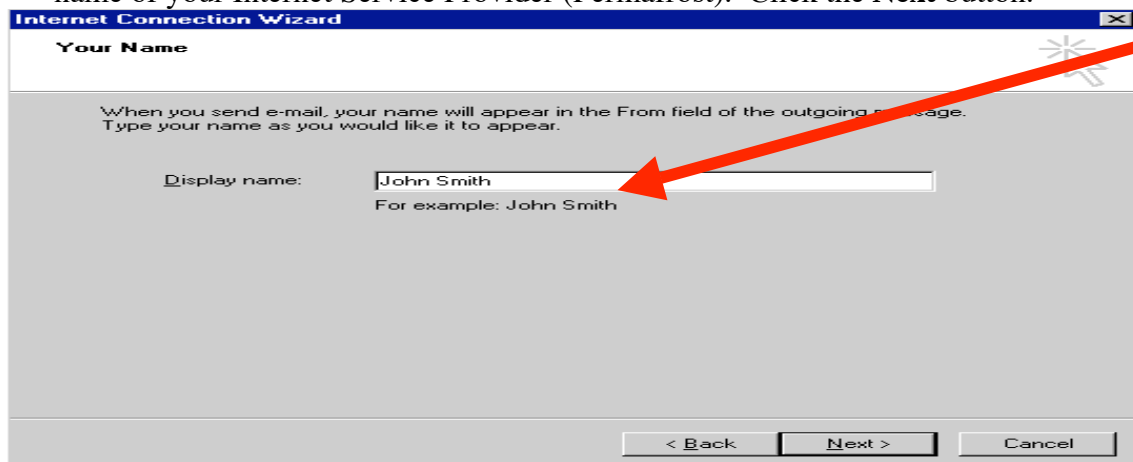
1. If you clicked **Yes** during the Internet Connection Wizard, proceed to step 5 to configure your email account.
2. Otherwise, open **Outlook Express** and click the **Tools** Menu and choose **Accounts**.



3. When the Internet Accounts window appears, select the **Mail** tab towards the top.
4. Click on the **Add** button and choose **Mail** from the submenu that appears.



5. The first step is to type your **Display Name**. A display name can be your name or the name of your Internet Service Provider (Permafrost). Click the **Next** button.



6. The next step is to enter your **Email Address**. New North Networks will provide this to you. Type in your email address.

Internet Connection Wizard

Internet E-mail Address

Your e-mail address is the address other people use to send e-mail messages to you.

E-mail address: johnsmith@permafrost.com

For example: someone@microsoft.com

< Back Next > Cancel

7. In the next window, make sure that **POP3** is selected in the drop down list of Incoming mail servers, and type in the name of your **Incoming** and **Outgoing** mail servers in the appropriate area of the window. Click the **Next** button

Internet Connection Wizard

E-mail Server Names

My incoming mail server is a POP3 server.

Incoming mail (POP3, IMAP or HTTP) server: mail.permafrost.com

An SMTP server is the server that is used for your outgoing mail.

Outgoing mail (SMTP) server: mail.permafrost.com

< Back Next > Cancel

8. For the last step, you will be asked to enter the **Username** and **Password** for your email account. Username will be the name of your email address (before @permafrost.com) and whatever password you chose for your account. Click the **Next** button

Internet Connection Wizard

Internet Mail Logon

Type the account name and password your Internet service provider has given you.

Account name: johnsmith

Password: XXXXX

Remember password

If your Internet service provider requires you to use Secure Password Authentication (SPA) to access your mail account, select the 'Log On Using Secure Password Authentication (SPA)' check box.

Log on using Secure Password Authentication (SPA)

< Back Next > Cancel

9. Congratulations, your email is now configured. Click the **Finish** button to exit the wizard

