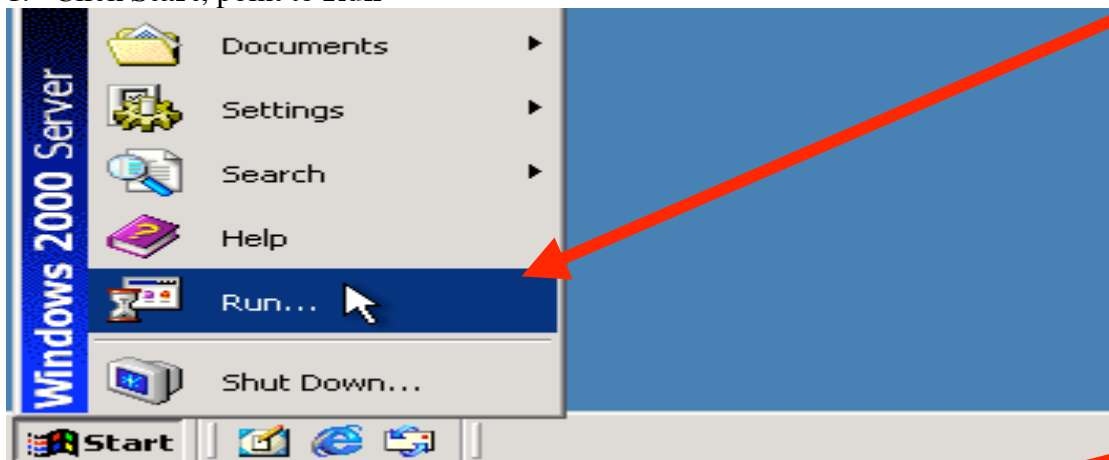


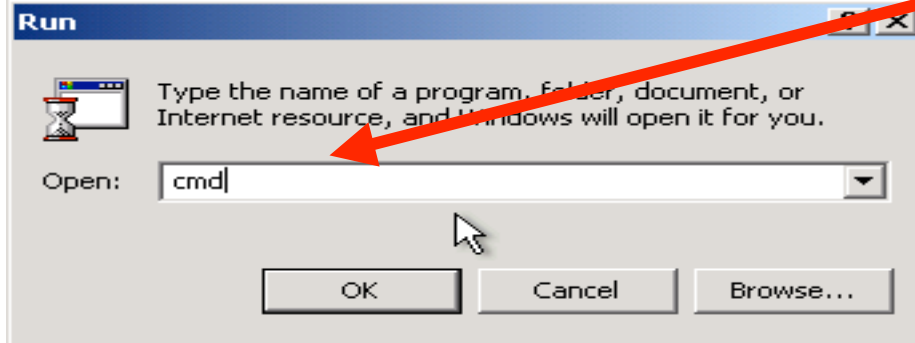
# Configuring your Cable Modem with Windows 2000

## Verifying the IP Address

1. Click **Start**, point to **Run**

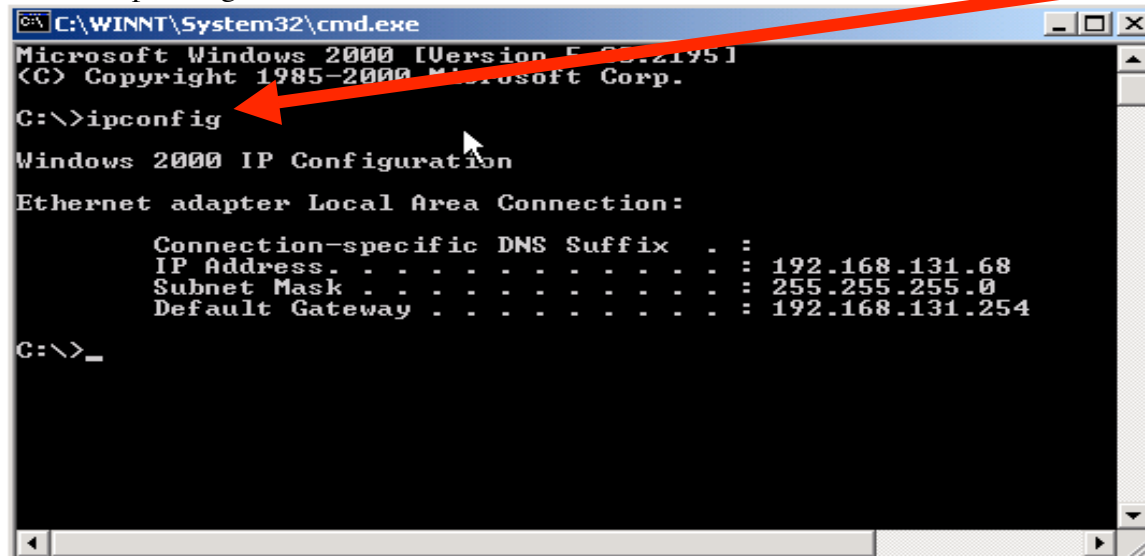


2. Type **cmd** in the dialog box that appears and click **OK**



A command window will open; much like DOS, and a cursor will blink next to C:\>

3. Type **Ipconfig**, push **Enter** and a list of installed adapters will appear with their corresponding IP address.



If an address of **209.52.165.xxx** or **192.168.0.xxx** appears then everything is normal.

4. If another address is displayed, type **Ipconfig /release** and push **Enter**. Then type **Ipconfig/renew** and push **Enter**.

```
C:\WINNT\System32\cmd.exe

C:\>ipconfig/release
Windows 2000 IP Configuration
IP address successfully released for adapter "Local Area Connect
C:\>ipconfig/renew
Windows 2000 IP Configuration
Ethernet adapter Local Area Connection:

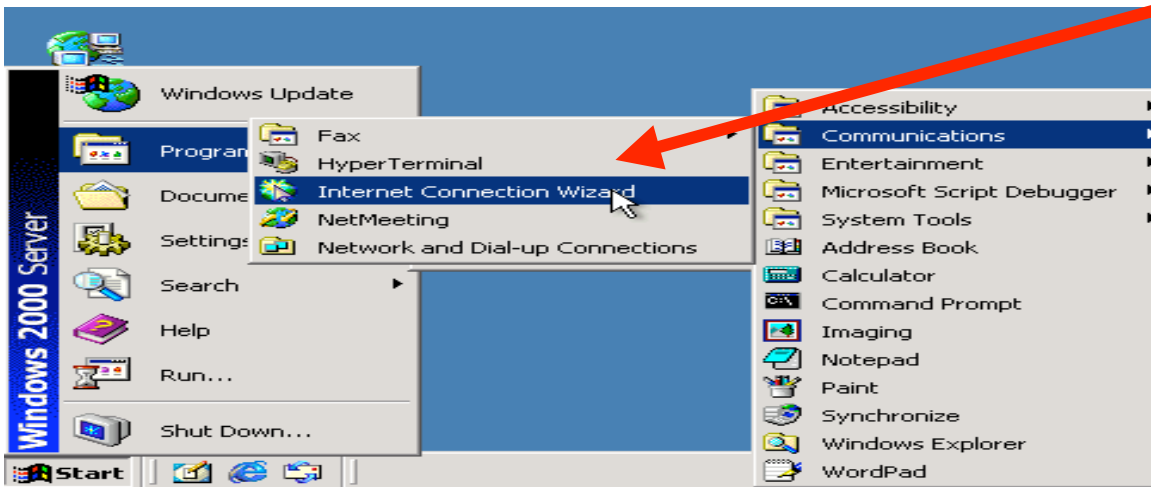
    Connection-specific DNS Suffix  . : 
    IP Address . . . . . : 192.168.131.68
    Subnet Mask . . . . . : 255.255.255.0
    Default Gateway . . . . . : 192.168.131.254

C:\>
```

5. Type **Exit** to close the command window

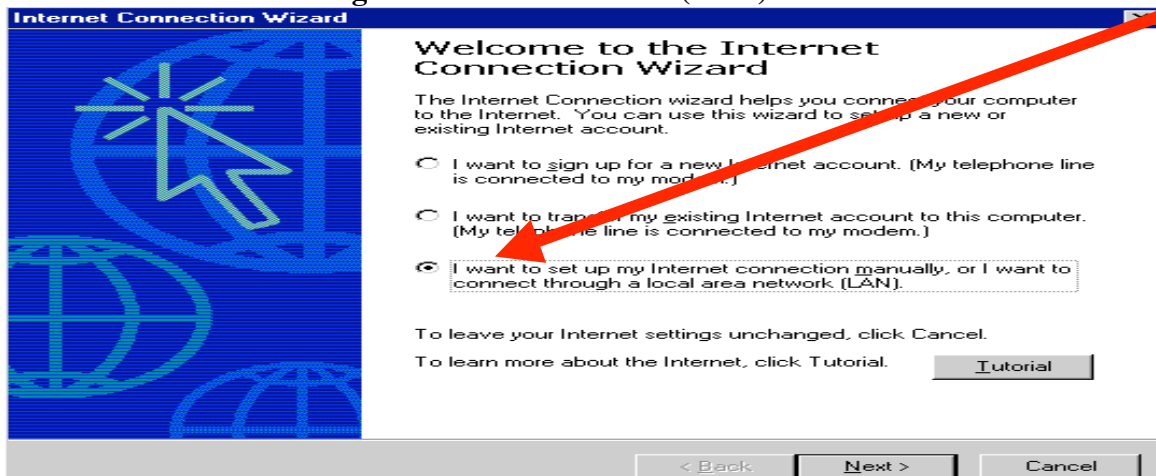
### Configuring Internet Explorer

1. Click **Start**, point to **Programs, Accessories, Communications**, and click **Internet Connection Wizard**

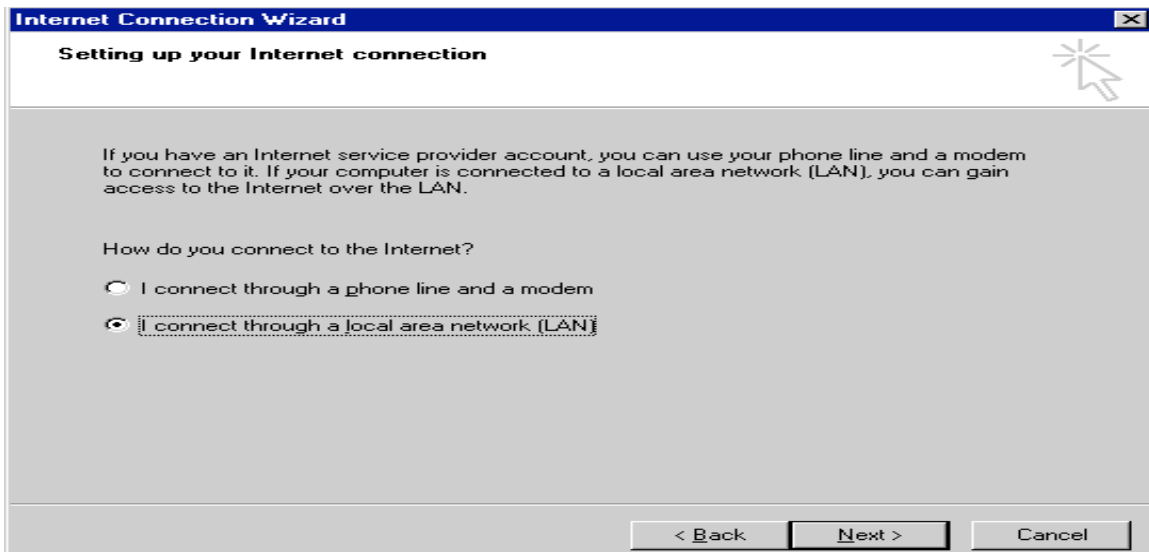


The first window that appears asks you how you want to connect to the Internet (dialup, LAN, etc.)

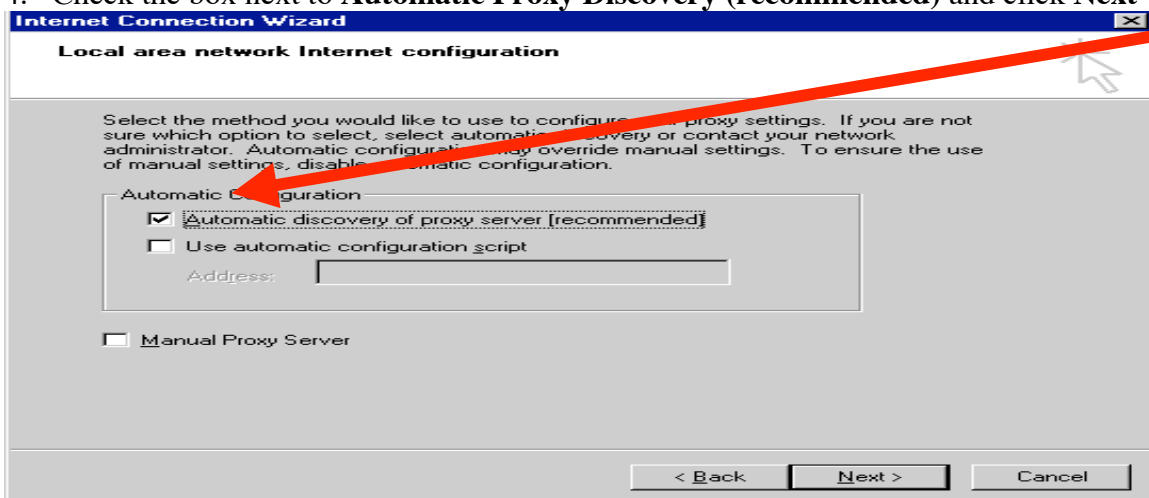
2. Select the button next to **“I want to set up my Internet Connection manually, or I want to connect through a local area network (LAN)”** and click **Next**



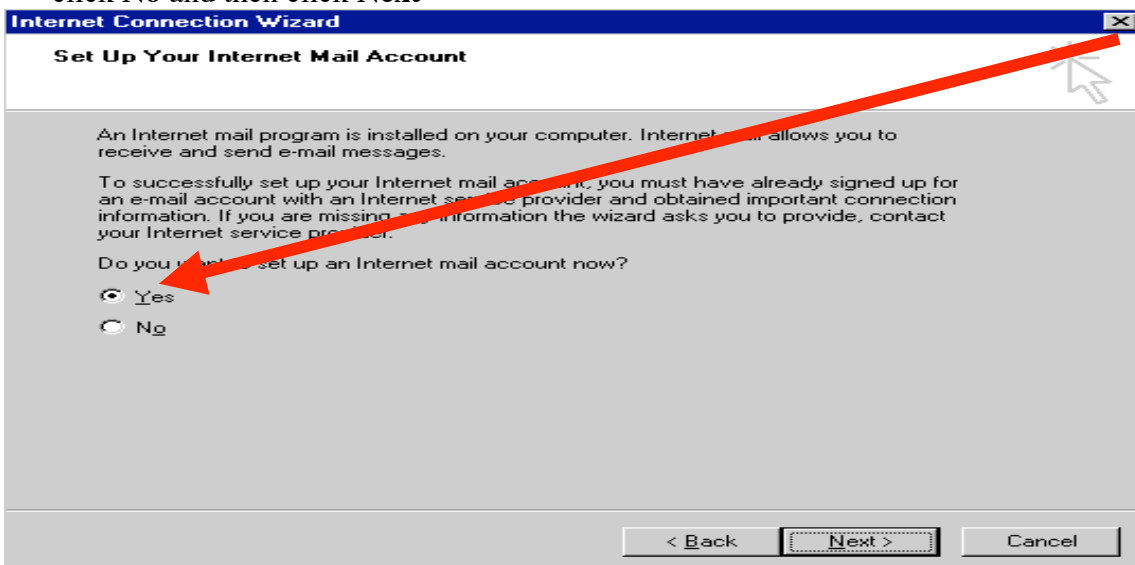
3. When asked, “How do you want to connect?” select the button next to **I connect through a Local Area Network** and click **Next**

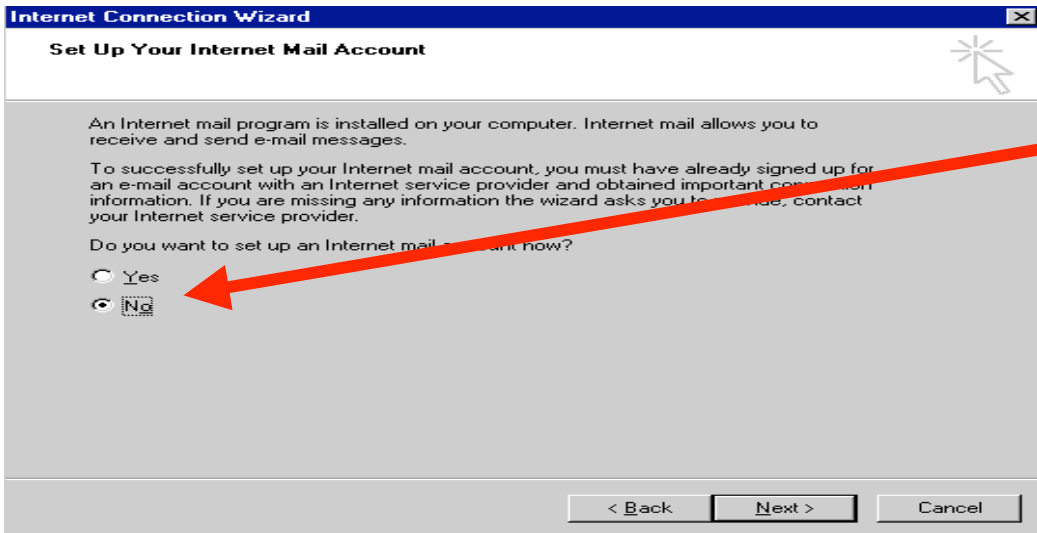


4. Check the box next to **Automatic Proxy Discovery (recommended)** and click **Next**

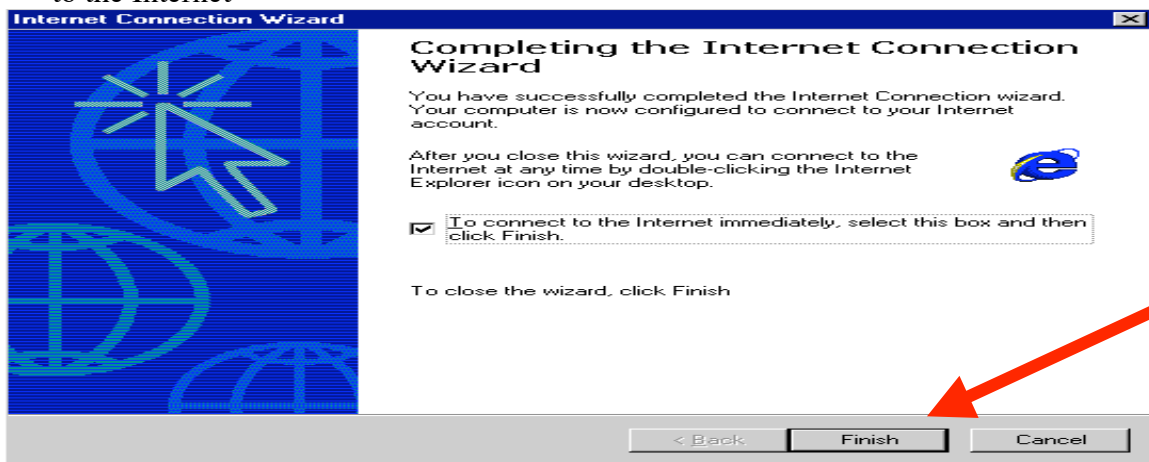


5. You're then asked to configure your Internet Mail account. Select **Yes** if your ready and the instructions for that will be outlined on page 4 of this document. Otherwise, click **No** and then click **Next**



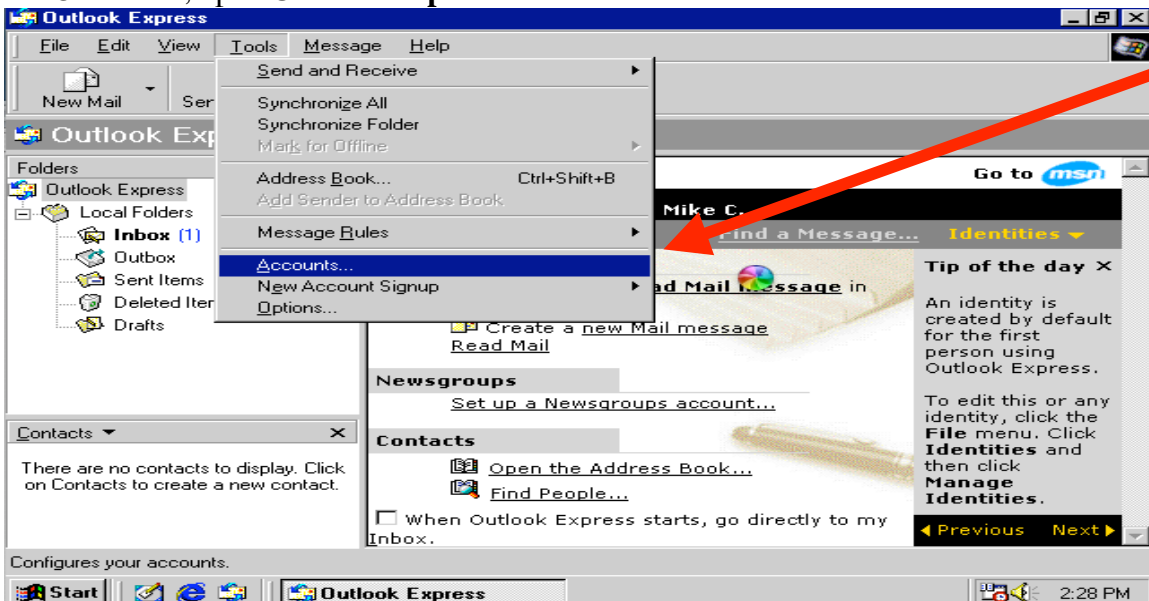


6. Click the **Finish** button and Internet Explorer should open and automatically connect to the Internet

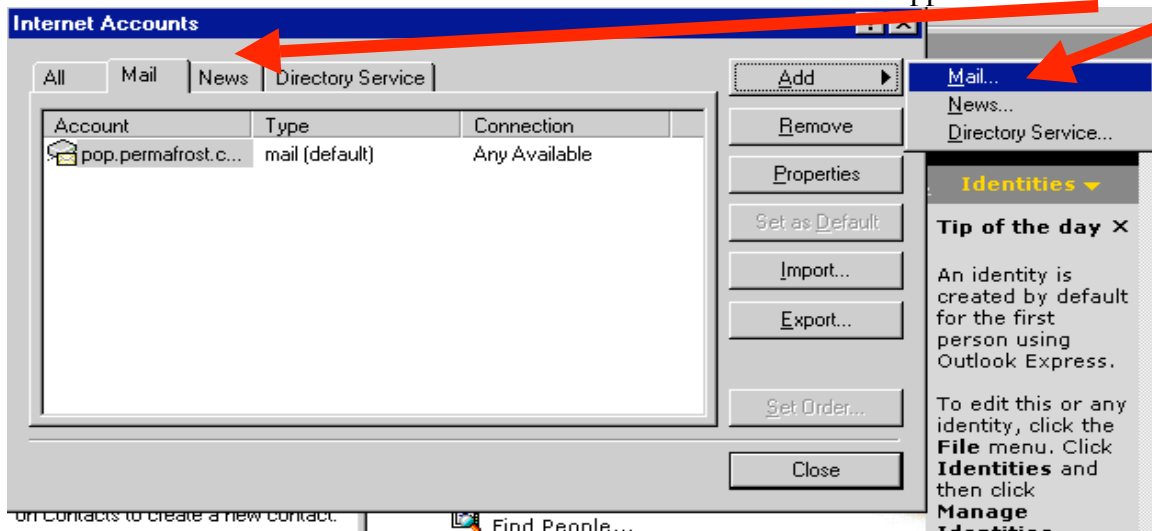


### Configuring your Internet Mail account

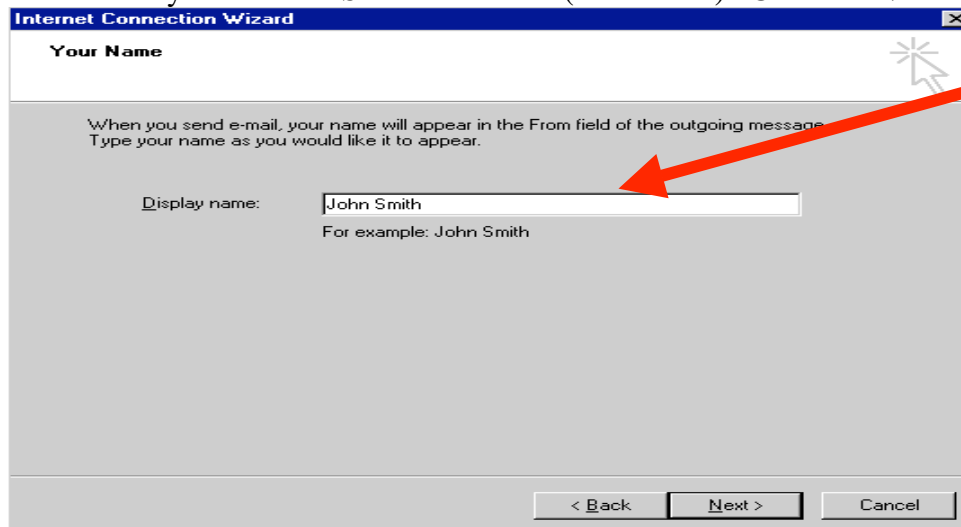
1. If you clicked **Yes** during the Internet Connection Wizard, proceed to step 5 to configure your email account.
2. Otherwise, open **Outlook Express** and click the **Tools** Menu and choose **Accounts**.



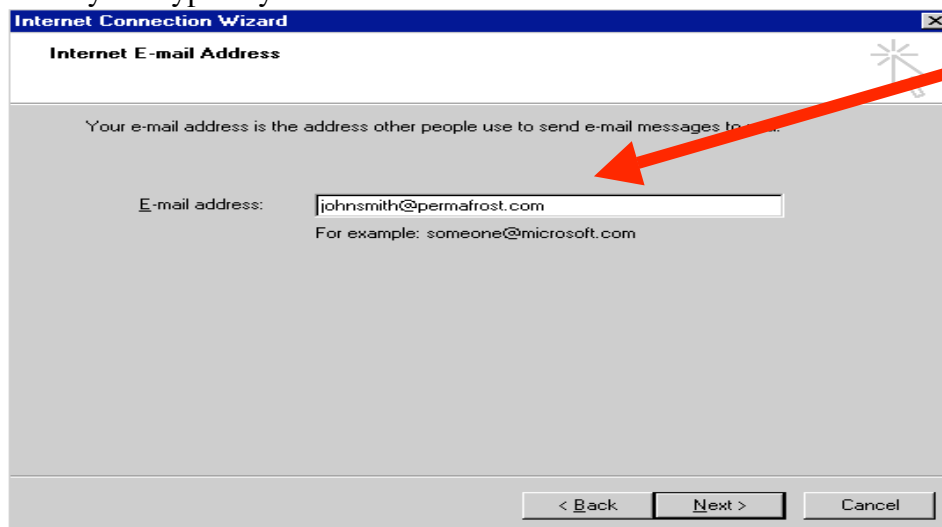
3. When the Internet Accounts window appears, select the **Mail** tab towards the top.
4. Click on the **Add** button and choose **Mail** from the submenu that appears.



5. The first step is to type your **Display Name**. A display name can be your name or the name of your Internet Service Provider (Permafrost). Click the **Next** button.



6. The next step is to enter your **Email Address**. New North Networks will provide this to you. Type in your email address.



7. In the next window, make sure that **POP3** is selected in the drop down list of Incoming mail servers, and type in the name of your **Incoming** and **Outgoing** mail servers in the appropriate area of the window. Click the **Next** button

Internet Connection Wizard

E-mail Server Names

My incoming mail server is a  server.

Incoming mail (POP3, IMAP or HTTP) server:

An SMTP server is the server that is used for your outgoing mail.

Outgoing mail (SMTP) server:

< Back   Next >   Cancel

8. For the last step, you will be asked to enter the **Username** and **Password** for your email account. Username will be the name of your email address (before @permafrost.com) and whatever password you chose for your account. Click the **Next** button

Internet Connection Wizard

Internet Mail Logon

Type the account name and password your Internet service provider has given you.

Account name:

Password:

Remember password

If your Internet service provider requires you to use Secure Password Authentication (SPA) to access your mail account, select the 'Log On Using Secure Password Authentication (SPA)' check box.

Log on using Secure Password Authentication (SPA)

< Back   Next >   Cancel

9. Click the **Finish** button to exit the wizard

Internet Connection Wizard

Completing the Internet Connection Wizard

You have successfully completed the Internet Connection wizard. Your computer is now configured to connect to your Internet account.

After you close this wizard, you can connect to the Internet at any time by double-clicking the Internet Explorer icon on your desktop.

To connect to the Internet immediately, select this box and then click Finish.

To close the wizard, click Finish

< Back   Finish   Cancel