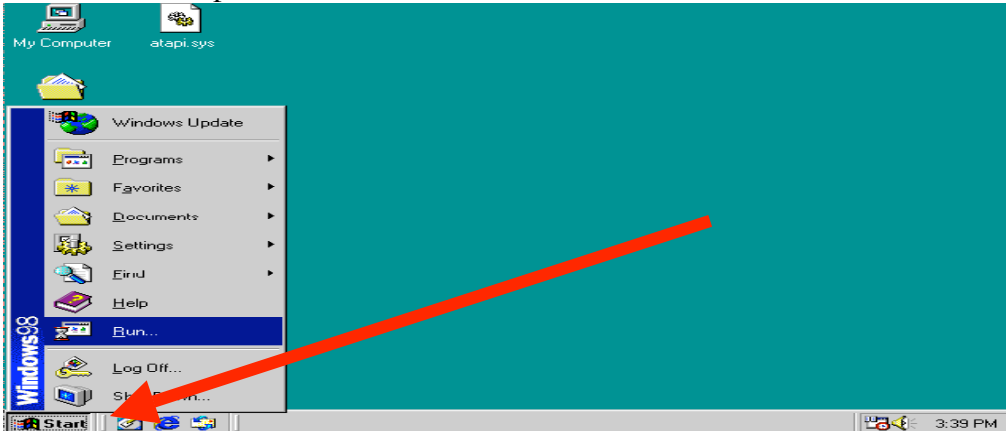


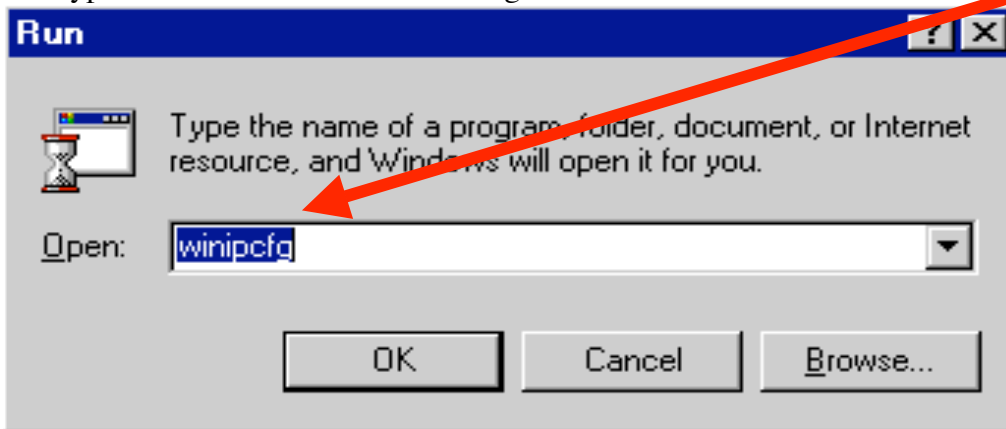
Configuring your Cable Modem with Windows 95/98/ME

Verifying your computers IP address

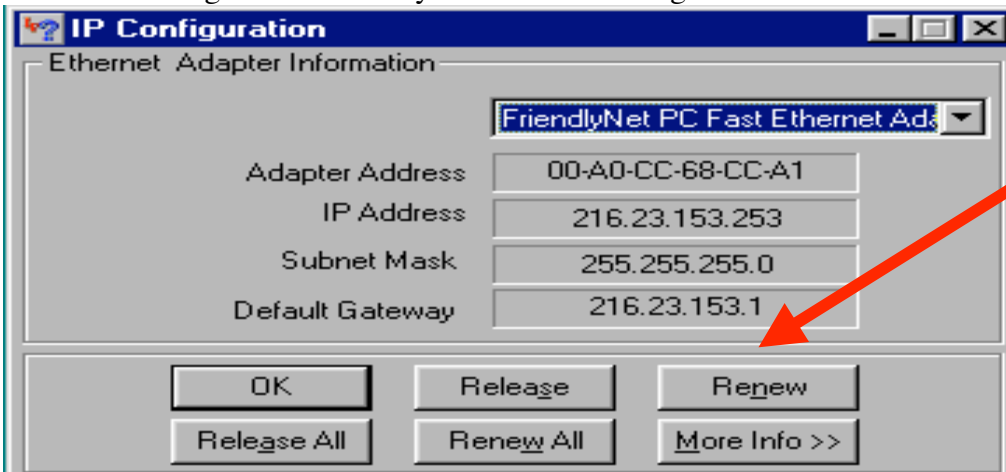
1. Click **Start**, point to **Run**



2. Type **WINIPCFG** in the Run dialog box and click **OK**



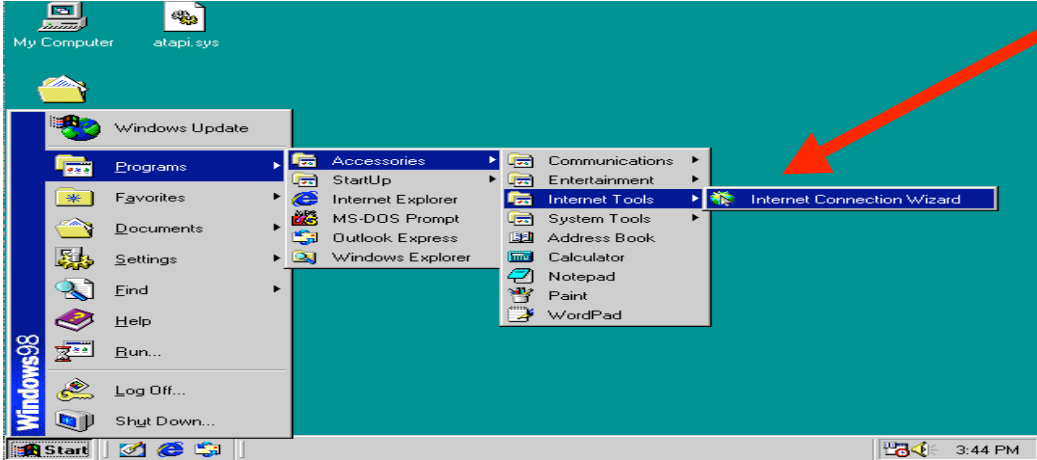
3. In the IP Configuration dialog box, verify that the computer has a valid **IP Address**. An address starting with 169 will be displayed if your computer is not receiving an address from the modem. Click the **Renew** button. If the new address starts with 209 or 192, proceed to step 4. Any address starting with 169 after clicking Renew means you are not receiving an address from the modem.



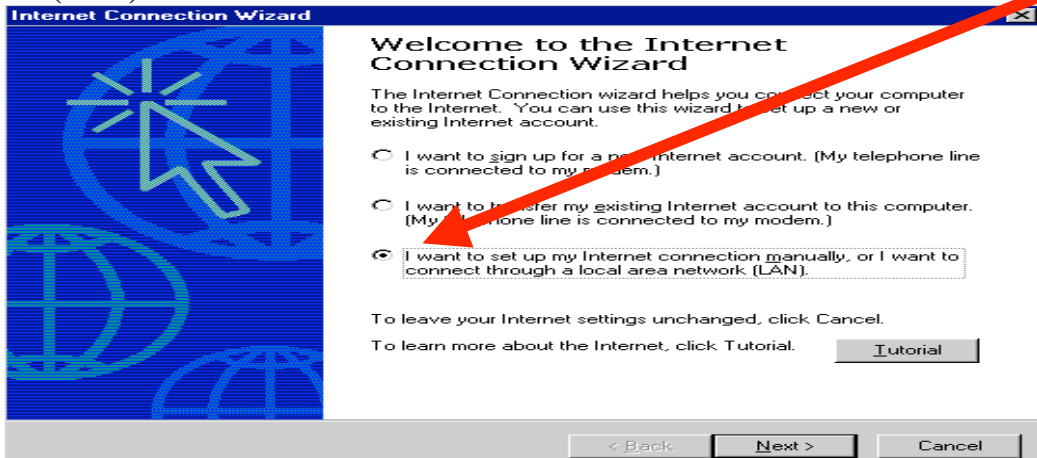
4. Click **OK** to close the run dialog box

Configuring Internet Explorer to your connection

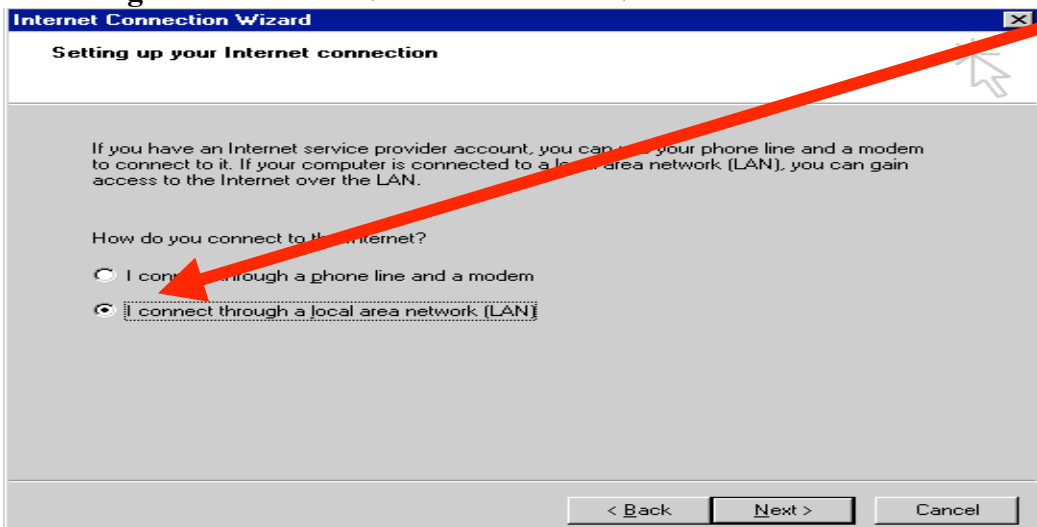
1. Click **Start**, point to **Programs**, **Accessories**, **Internet tools**, and click **Internet Connection Wizard**



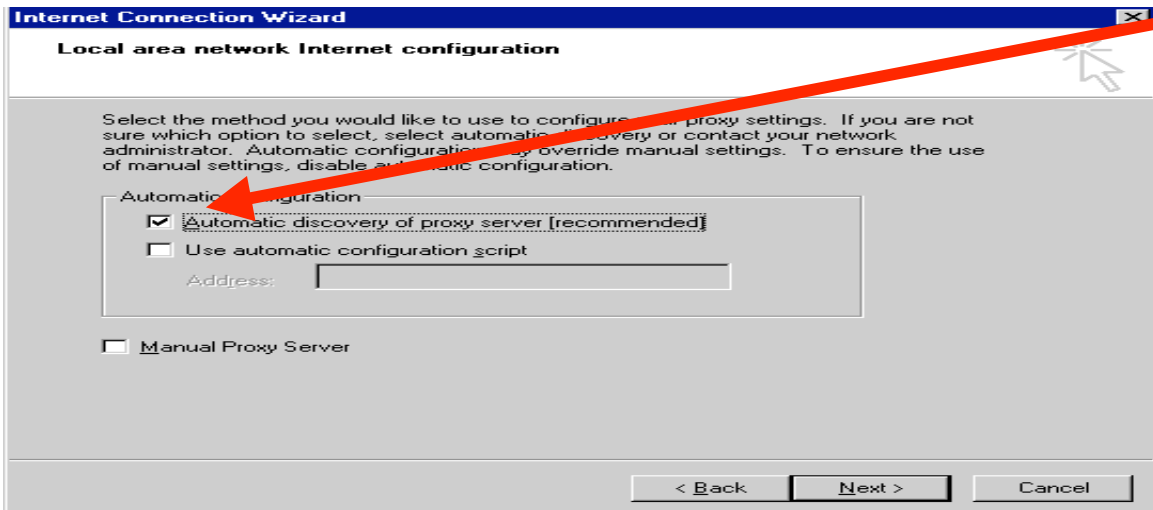
2. The first window that appears asks you how you want to connect to the Internet (dialup, LAN, etc.), Select the button next to “**I want to set up my Internet Connection manually, or I want to connect through a local area network (LAN)**” and click **Next**



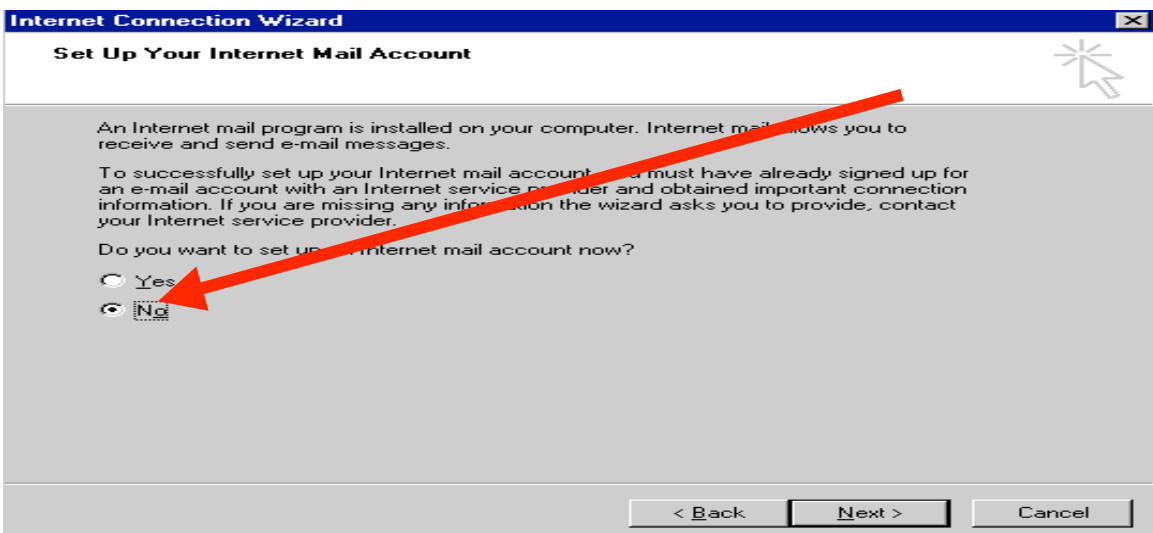
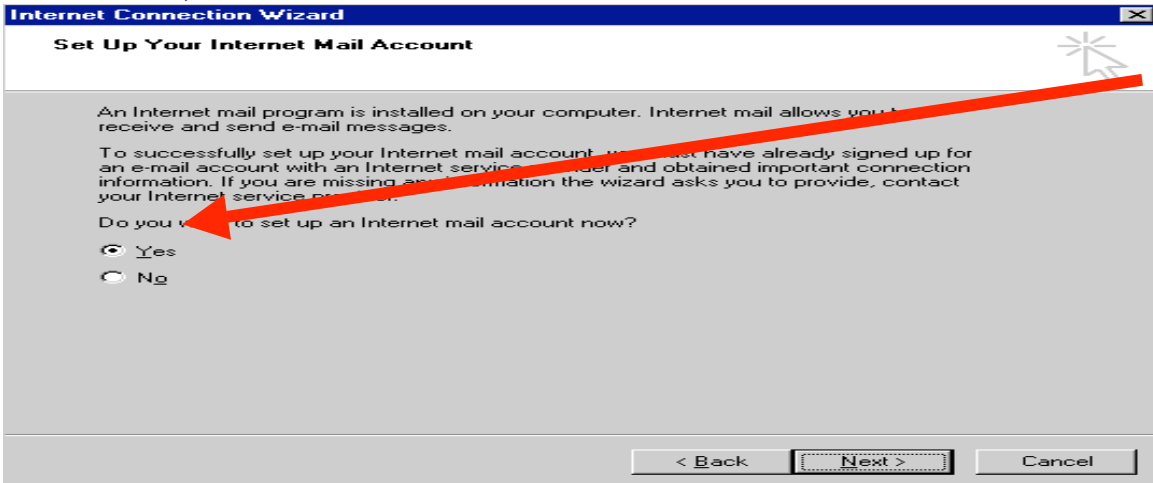
3. When asked, “How do you want to connect?””, select the button next to **I connect through a Local Area Network** and click **Next**



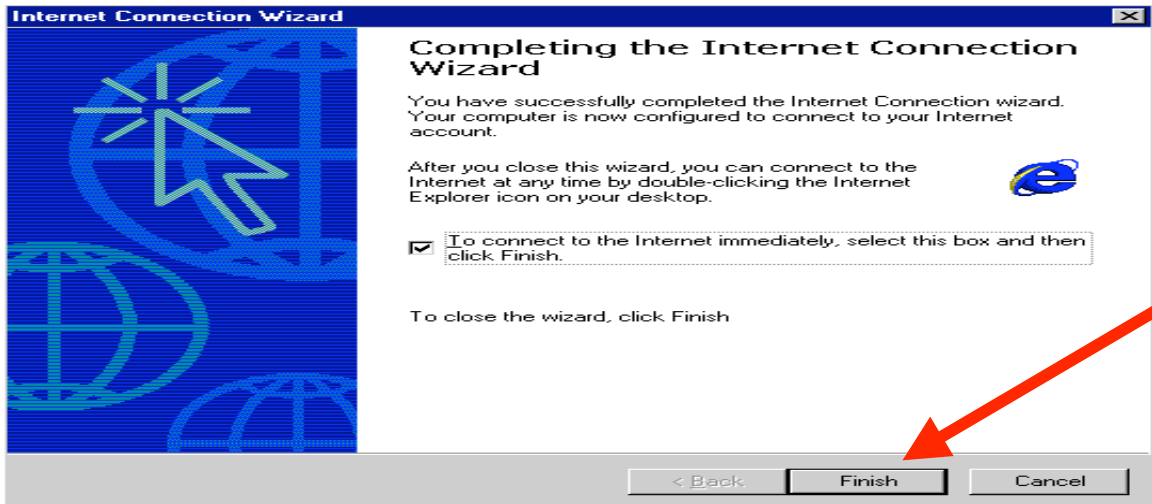
4. Check the box next to **Automatic Proxy Discovery (recommended)** and click **Next**



5. You're then asked to configure your Internet Mail account. Select **Yes** if your ready and the instructions for that will be outlined on page 4 of this document. Otherwise, click **No** and then click **Next**

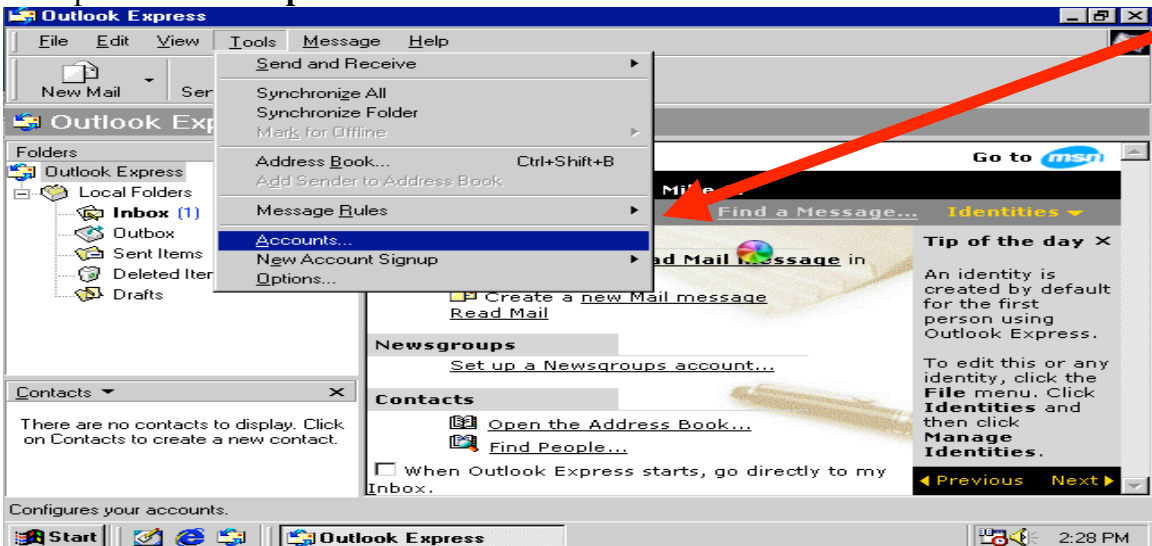


6. Click the **Finish** button and Internet Explorer should open and automatically connect to the Internet

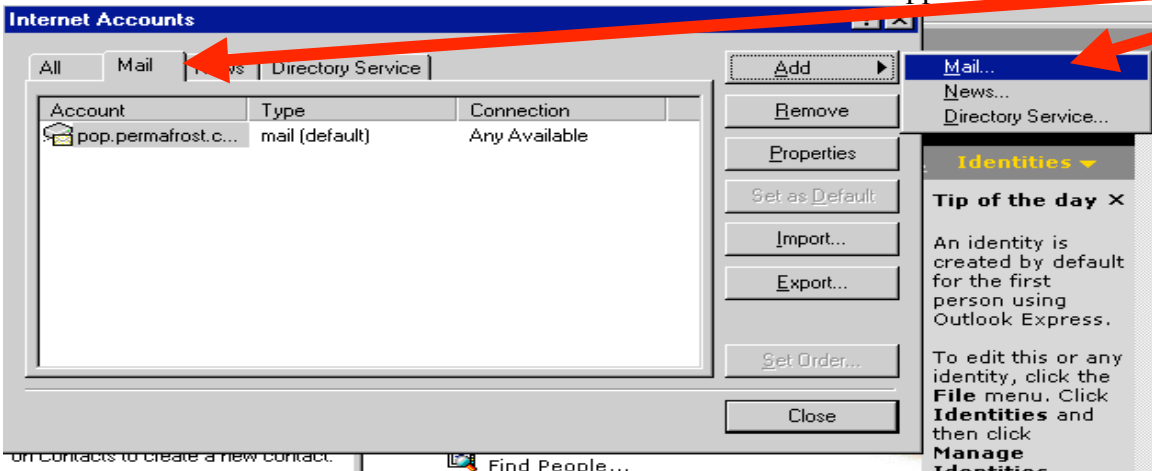


Configuring your Internet Mail account

1. If you clicked **Yes** during the Internet Connection Wizard, proceed to Step 5
2. Open **Outlook Express** and click the **Tools** Menu and choose **Accounts**.



3. When the Internet Accounts window appears, select the **Mail** tab towards the top.
4. Click on the **Add** button and choose **Mail** from the submenu that appears.



5. The first step is to type your **Display Name**. A display name can be your name or the name of your Internet Service Provider (Permafrost). Click the **Next** button.

Internet Connection Wizard

Your Name

When you send e-mail, your name will appear in the From field of the outgoing message. Type your name as you would like it to appear.

Display name:

For example: John Smith

< Back Next > Cancel

6. The next step is to enter your **Email Address**. This will be provided to you from New North Networks. Type in your email address. Click the **Next** button.

Internet Connection Wizard

Internet E-mail Address

Your e-mail address is the address other people use to send e-mail messages to you.

E-mail address:

For example: someone@microsoft.com

< Back Next > Cancel

7. In the next window, make sure that **POP3** is selected in the drop down list of Incoming mail servers, and type in the name of your **Incoming** and **Outgoing Mail Servers** in the appropriate area of the window. Click the **Next** button

Internet Connection Wizard

E-mail Server Names

My incoming mail server is a server.

Incoming mail (POP3, IMAP or HTTP) server:

An SMTP server is the server that is used for your outgoing e-mail.

Outgoing mail (SMTP) server:

< Back Next > Cancel

8. For the last step, you will be asked to enter the **Username** and **Password** for your email account. Your Username will be the name of your email address (before @permafrost.com) and whatever password you chose for your account. Click the **Next** button

Internet Connection Wizard

Internet Mail Logon

Type the account name and password your Internet service provider has given you.

Account name: johnsmith

Password: XXXXX

Remember password

If your Internet service provider requires you to use Secure Password Authentication (SPA) to access your mail account, select the 'Log On Using Secure Password Authentication (SPA)' check box.

Log on using Secure Password Authentication (SPA)

< Back Next > Cancel

9. Congratulations, your email is now configured. Click the **Finish** button.

Internet Connection Wizard

Completing the Internet Connection Wizard

You have successfully completed the Internet Connection wizard. Your computer is now configured to connect to your Internet account.

After you close this wizard, you can connect to the Internet at any time by double-clicking the Internet Explorer icon on your desktop.

To connect to the Internet immediately, select this box and then click Finish.

To close the wizard, click Finish

< Back Finish Cancel